



# UNFPA Strategic Plan (SP)

Briefing to new UNFPA Executive Board members  
19 January 2016



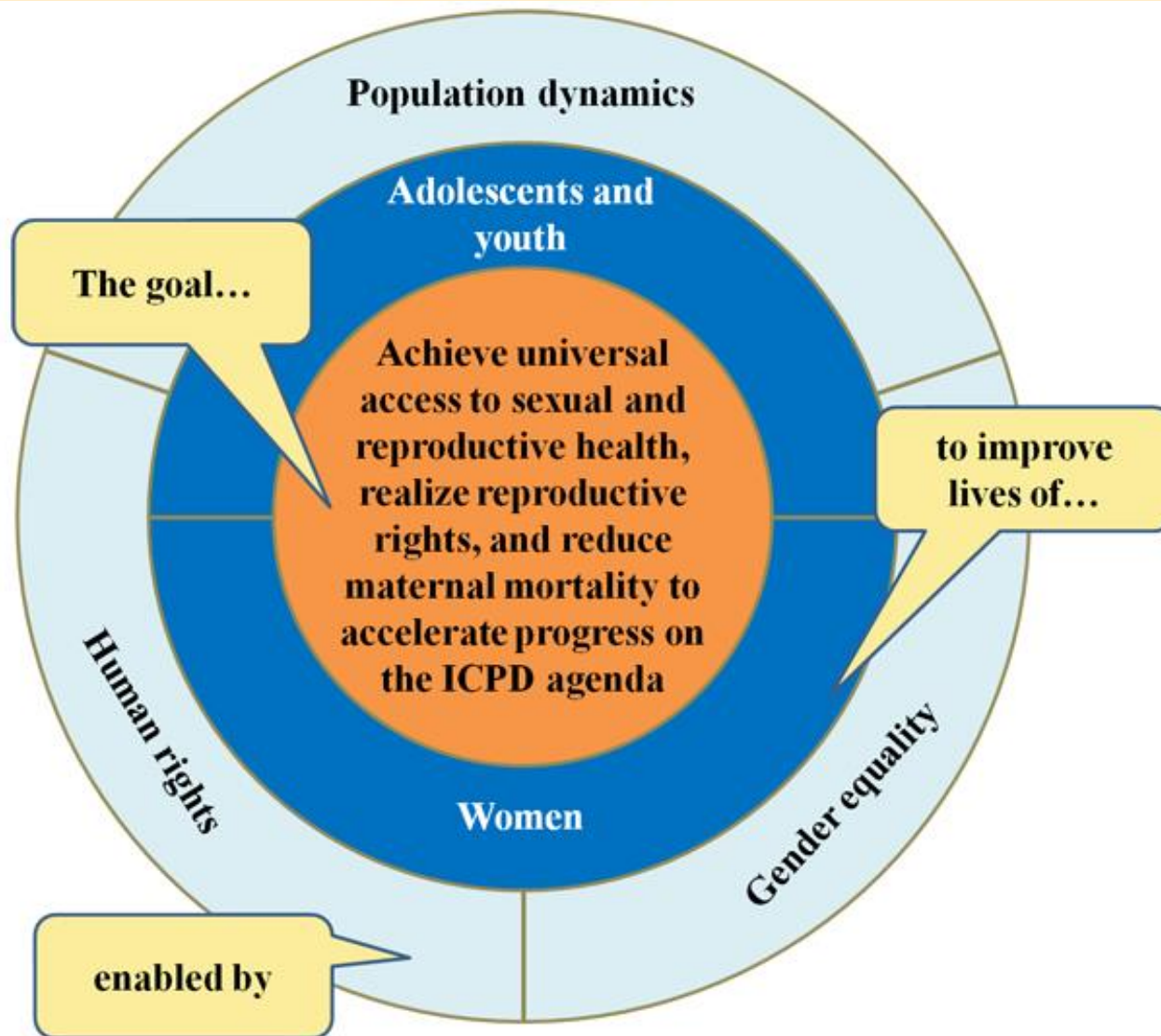
UNFPA Strategic  
Plan 2014 - 2017  
Implementing

UNFPA Strategic  
Plan 2018 - 2021  
Developing

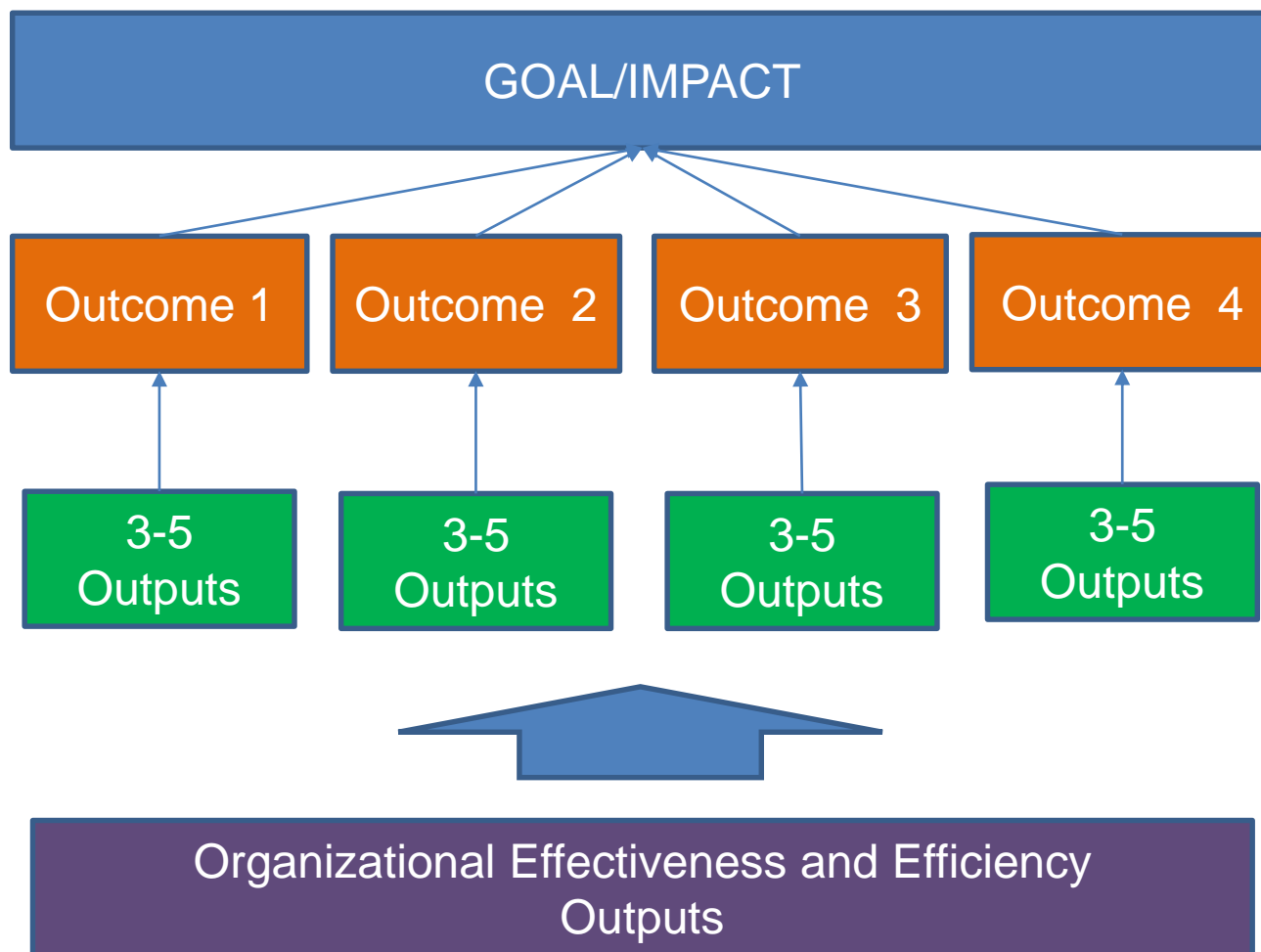
# Key Element of Strategic Planning



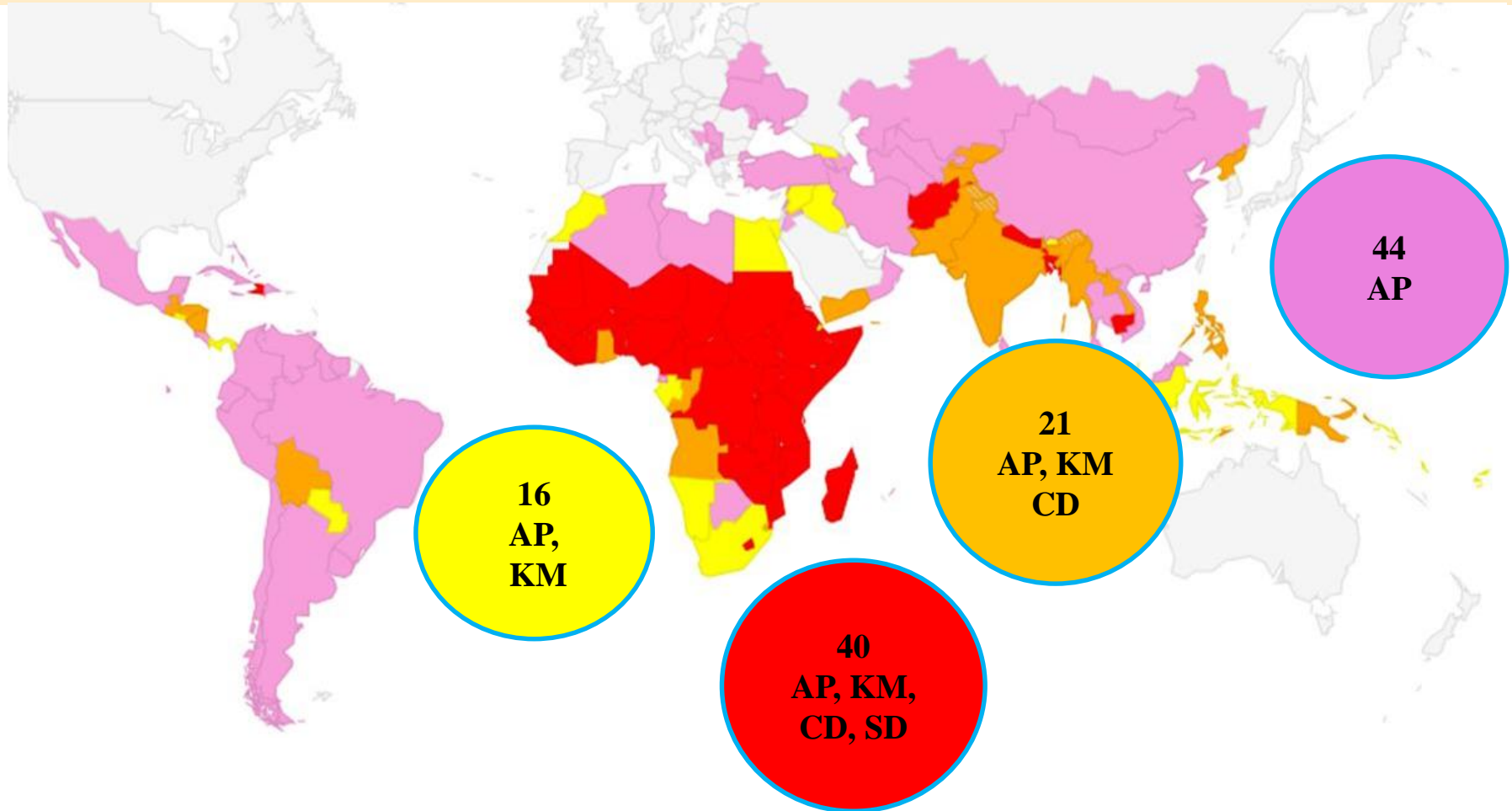
# SDGs > ICPDs > Bull's Eye - Strategic Focus



# SP Results Framework



# Business Model -Modes of Engagement 2014-2017



## Modes of engagement

A/P = Advocacy and policy dialogue/advice

KM = Knowledge management

CD = Capacity development

SD = Service delivery

# Resource Allocation 2014 - 2017



## Need

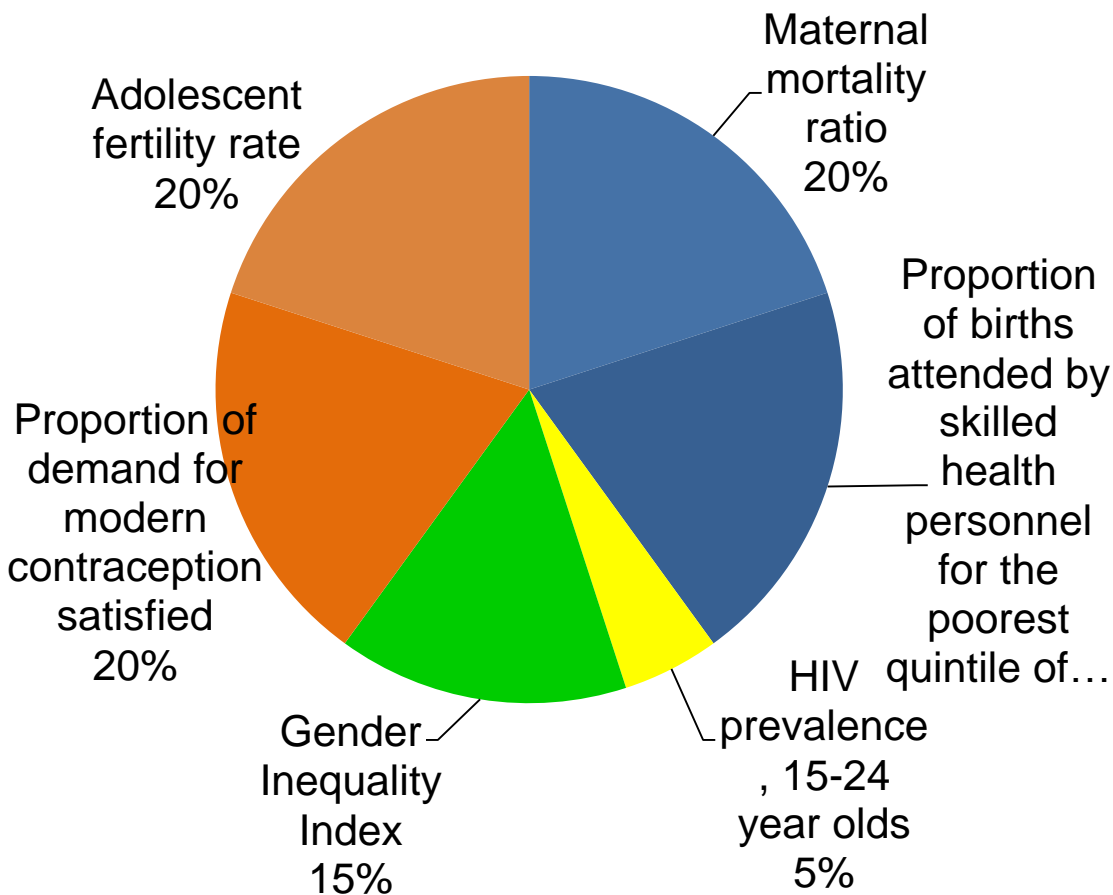
## Ability to finance

### Gross National Income per capita (GNI pc):

- LIC
- LMIC
- UMIC
- HIC

### Additional criteria

1. Risk for humanitarian crises
2. Income inequality



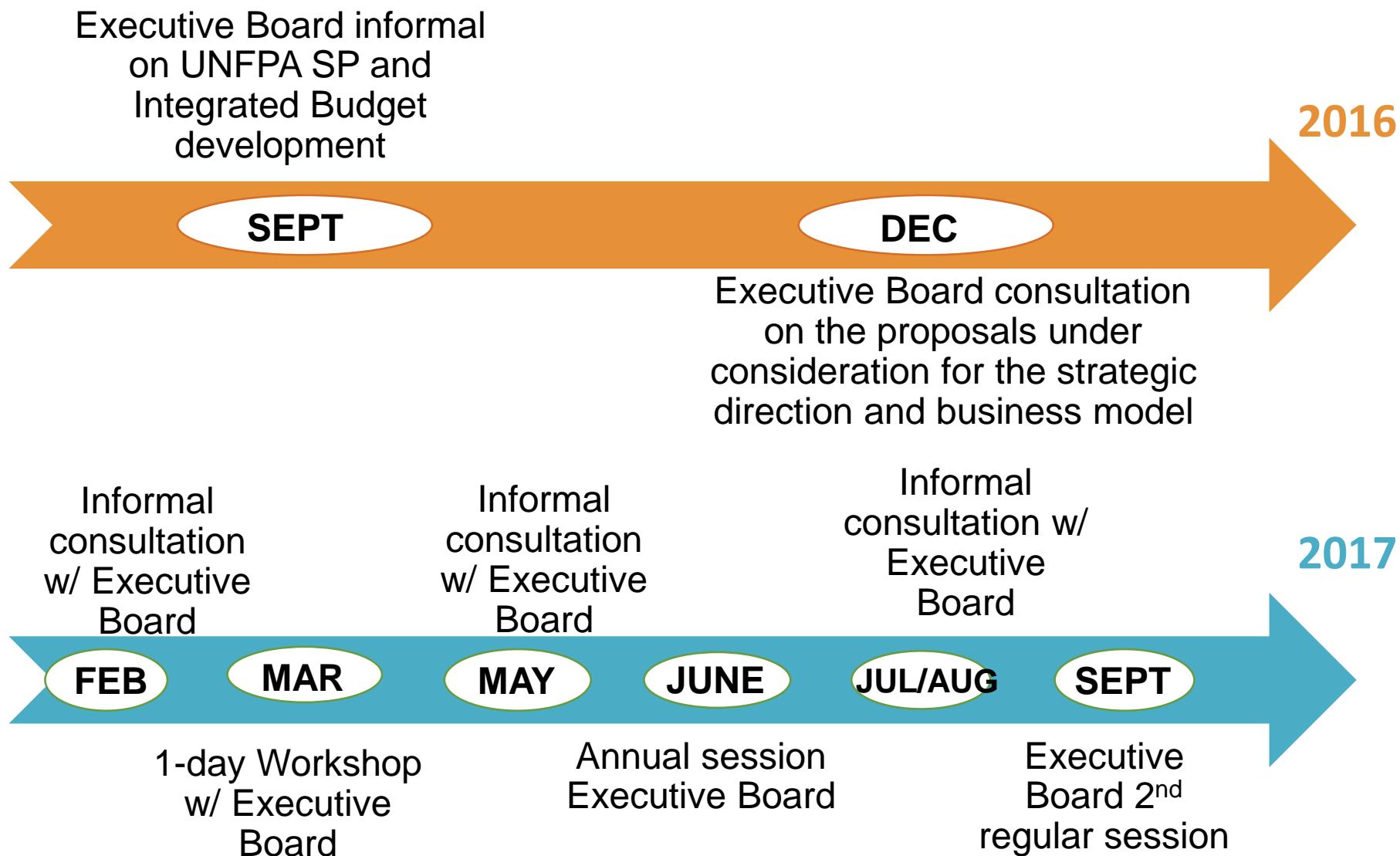
# Share of Regular Resources 2014 - 2017



|               | <b>Share<br/>2014-2015</b> | <b>Share<br/>2016-2017</b> | <b>Share of<br/>population</b> | <b>Number of<br/>countries</b> |
|---------------|----------------------------|----------------------------|--------------------------------|--------------------------------|
| <b>Red</b>    | 50-52%                     | 59-61%                     | 18%                            | 40                             |
| <b>Orange</b> | 21-23%                     | 20-22%                     | 30%                            | 21                             |
| <b>Yellow</b> | 10-12%                     | 6-8%                       | 9%                             | 16                             |
| <b>Pink</b>   | 15-17%                     | 11-13%                     | 44%                            | 44                             |



# Roadmap: Strategic Plan 2018 - 2021



# Approach to Developing Strategic Plan 2018 - 2021



- Strategic planning for 2018-2021 **with 2030 time horizon**
- Focusing on delivering **transformative results** across humanitarian, development, peacebuilding continuum
- Utilizing UNFPA **internal capacity** and **capitalizing global knowledge**
- Fully **informed by evidence**, including evaluative evidence
- **Engaging with all staff** at HQ, regional and country levels
- **Consulting with key stakeholders**, member States, donors, beneficiaries, CSOs and private sector
- Moving from comparative to **collaborative advantages** w/ UN partners, **guided by QCPR**
- Using **risk-informed strategic planning** process
- Improving organizational effectiveness and efficiency through **strengthened linkage of resources and results**

# Delivering ICPD within the 2030 Agenda



# Alignment with SDGs

## 16 UNFPA-Prioritized Indicators



5.2.1 **GBV** from current or former intimate partner

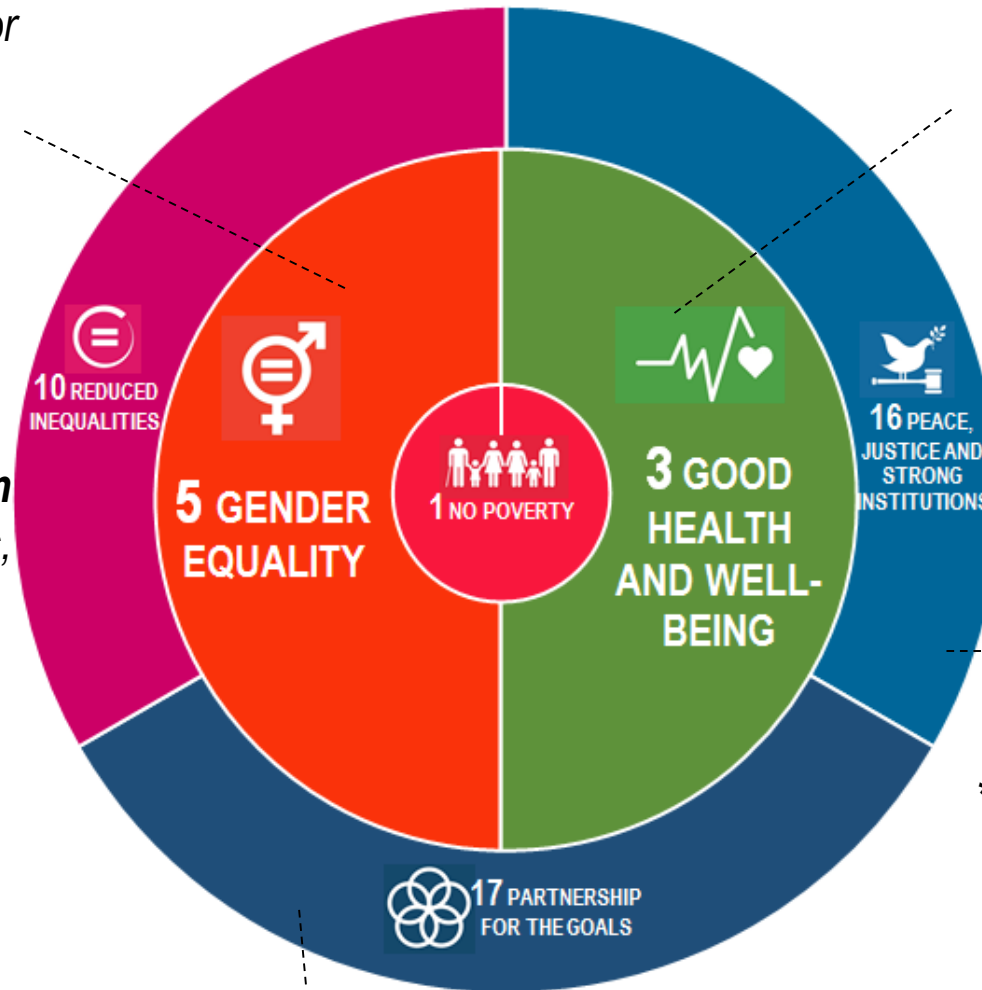
5.2.2 **GBV** from non-intimate partner

5.3.1 **Child marriage**

5.3.2 **FGM**

5.6.1 **Women's informed decision** on sexual relations, contraceptive use and reproductive health care

5.6.2 **Laws and regulations that guarantee women's access to SRH care, information and education**



3.1.1 **Maternal mortality**

3.1.2 **Skilled birth attendance**

3.3.1 **HIV incidents**

3.7.1 **Need for Family Planning satisfied w/ modern methods**

3.7.2 **Adolescent birth rate**

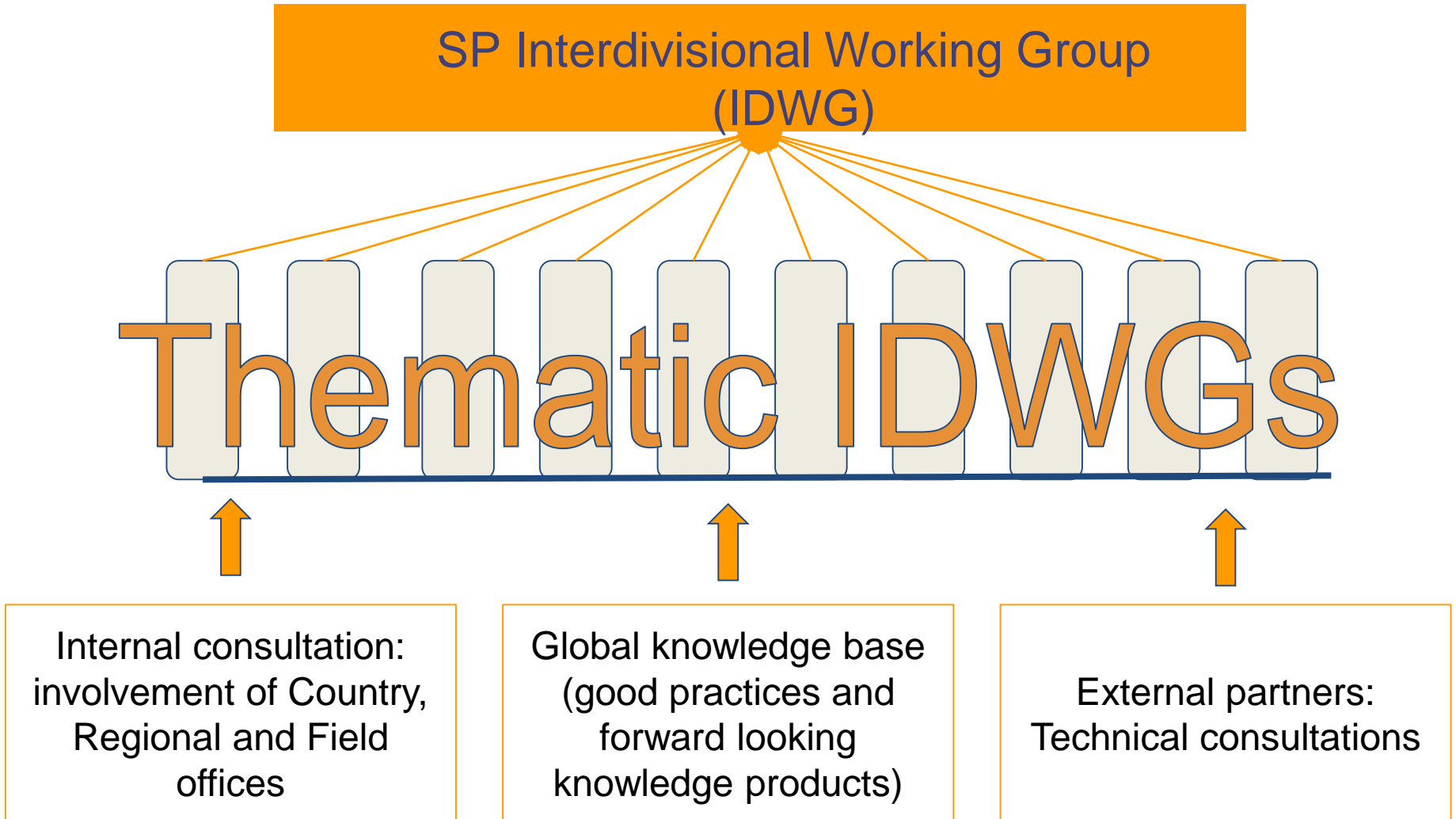
3.8.1 **Universal health coverage**

16.9.1 **Birth registration**

\*11.a.1 **Positive economic, social and environmental links** between urban, peri-urban and rural areas

17.18.1 **SD indicators produced at national level with full disaggregation**

17.19.2 **Census in last 10 years and CRVS**



# Programmatic improvements for greater Organizational Effectiveness & Efficiency



- Improve programme budgeting
- Streamline programme interventions
- Reduce programme fragmentation
- Strengthen results monitoring and reporting
- Transform knowledge management for cross-country and cross-regional knowledge sharing and synergies



Thank you

