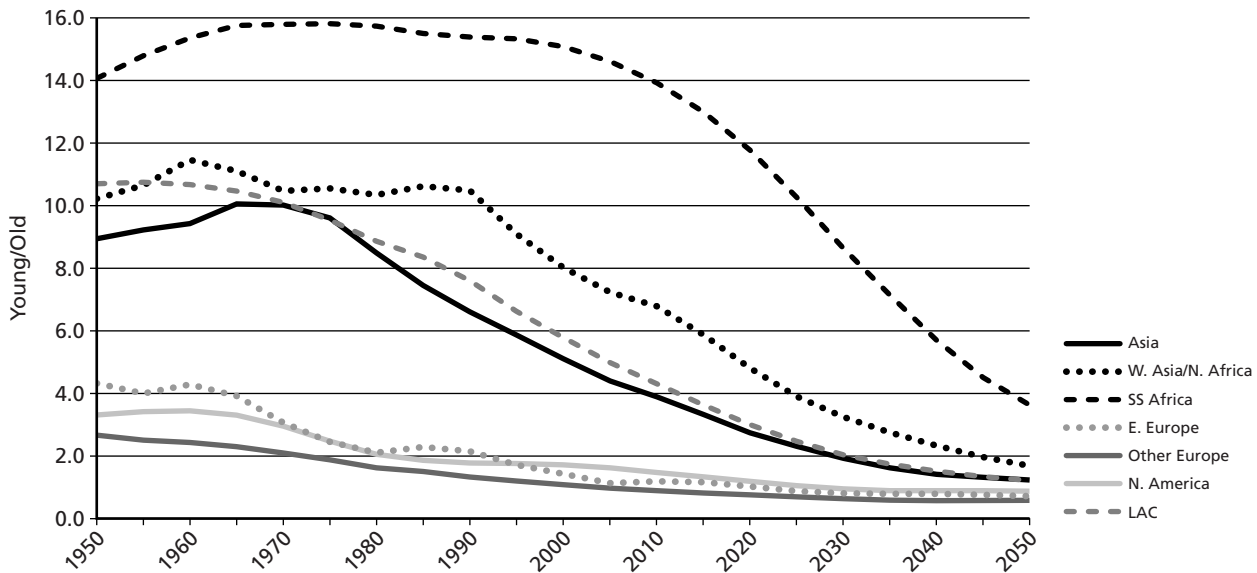
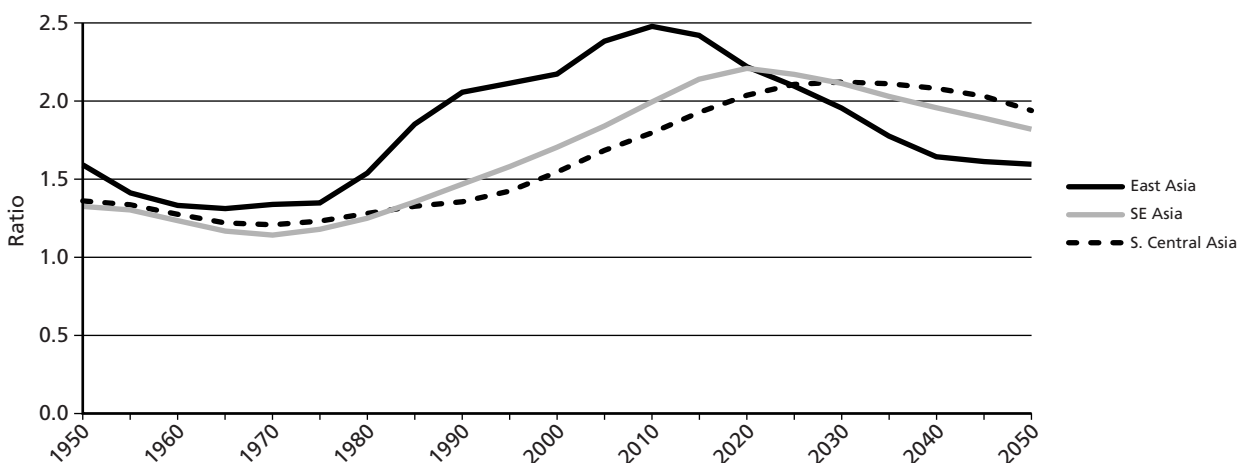


Ratio of young (0-15) to old (65+) populations, 1950-2050, all regions



Source: United Nations. *Sex and Age Quinquennial 1950-2050 (The 1996 Revision)*.

Ratio of working-age to non-working-age populations, 1950-2050, East Asia, Southeast Asia and South Asia



Source: United Nations. *Sex and Age Quinquennial 1950-2050 (The 1996 Revision)*.